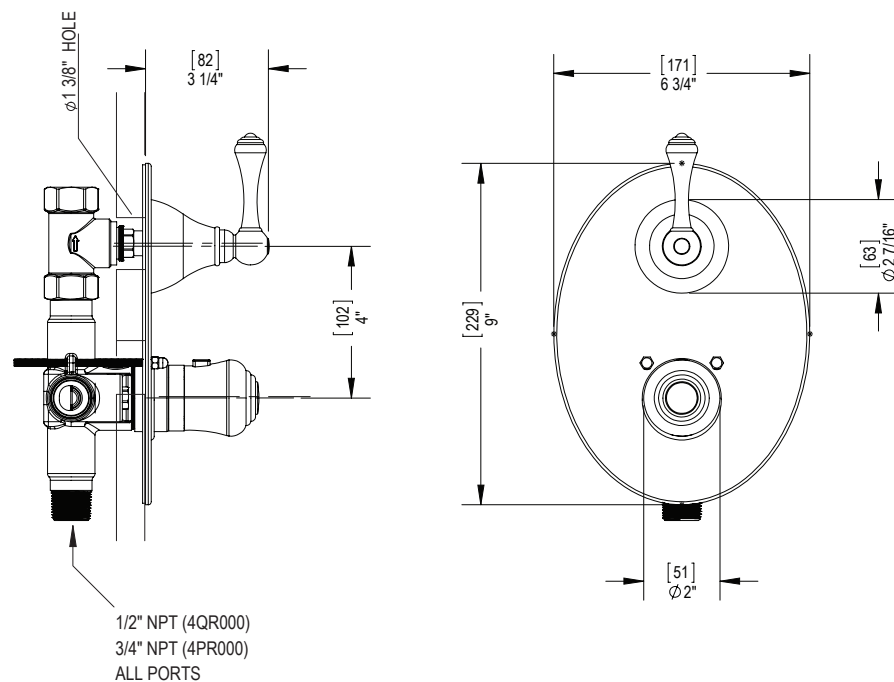


#### FEATURES:

- Brass construction with choice of 21 finishes
- Lever or square handle for Shut-Off Volume Control Valve
- Single handle Mixer control
- Factory preset at 38°C (100.4°F)
- Temperature range from 15°C (59°F) to 60°C (140°F)
- Safety stop with override function



#### CONTACT US:

If you need assistance with installation, replacement parts or have any questions regarding your Rubinet product, please call a Customer Service representative at: 905-851-6781 toll free 1-800-461-5901 or visit [www.rubinet.com](http://www.rubinet.com)

151209

THE **Rubinet** FAUCET COMPANY

## ASSEMBLY INSTRUCTION

4P-4QFML or C

TEMPERATURE CONTROL VALVE WITH BUILT-IN STOPS AND VOLUME CONTROL VALVE



**4PFML ( 1/2" valve )**  
**4QFML ( 3/4" valve )**



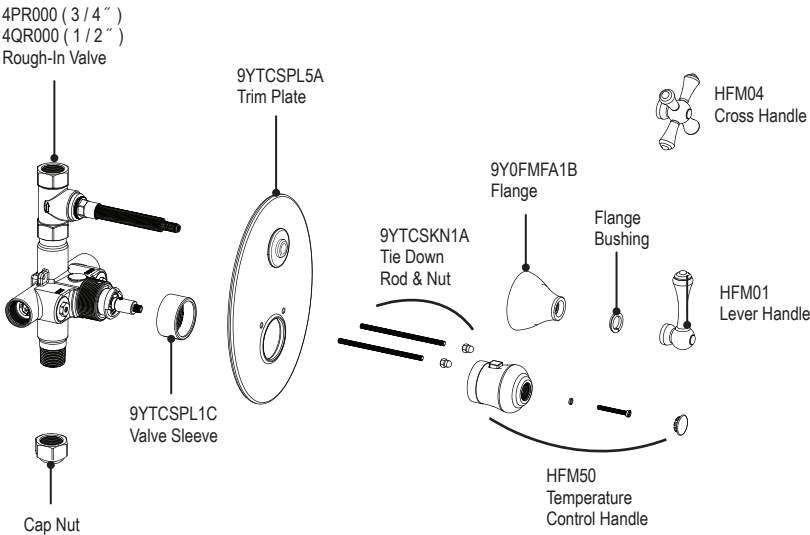
**4PFMC ( 1/2" valve )**  
**4QFMC ( 3/4" valve )**

#### REMOVAL OF FIXTURE:

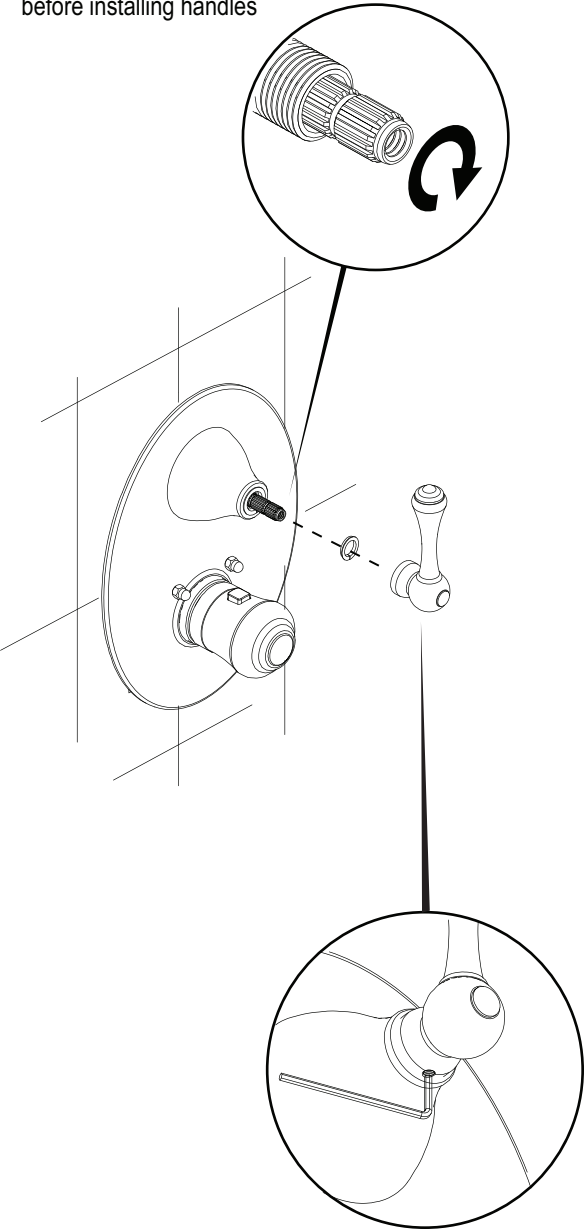
Always turn the water supply off before removing the existing fixture or disassembling a valve. Open all fixture handles to relieve water pressure and to ensure that the water has been successfully turned off.

#### CARE OF FIXTURE:

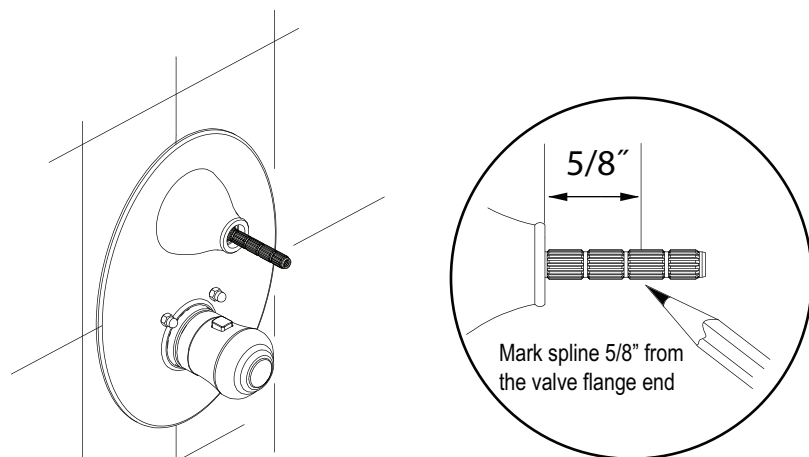
The use of warm water and a soft cloth is all that is required to clean Rubinet products. The patina of our living finishes (Oil Rubbed Bronze & Tuscan Brass) will change as a result of normal use. Applying Mineral Oil on occasion will create a softer look, subtle color changes and character.



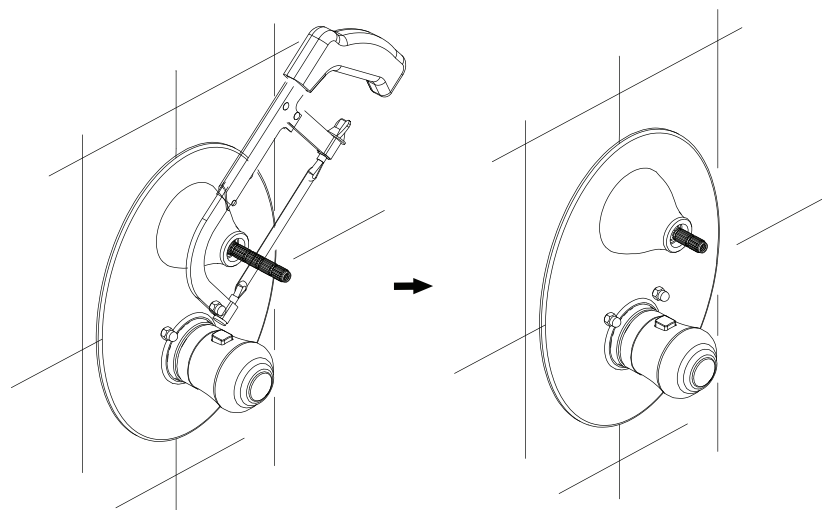
Turn cartridge spline into OFF position  
before installing handles



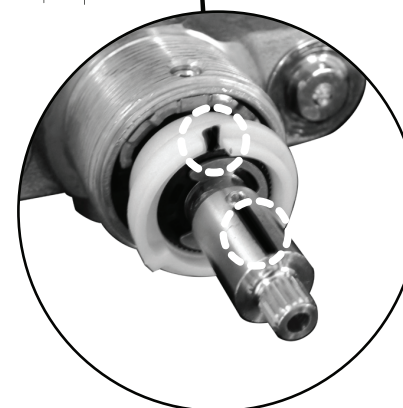
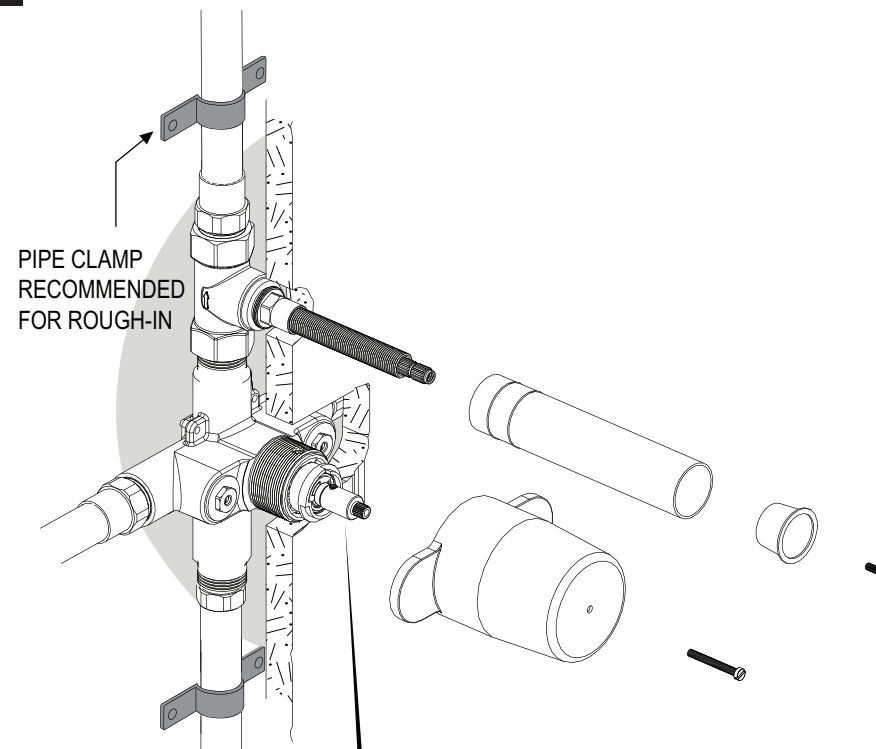
4



Cut spline where marked



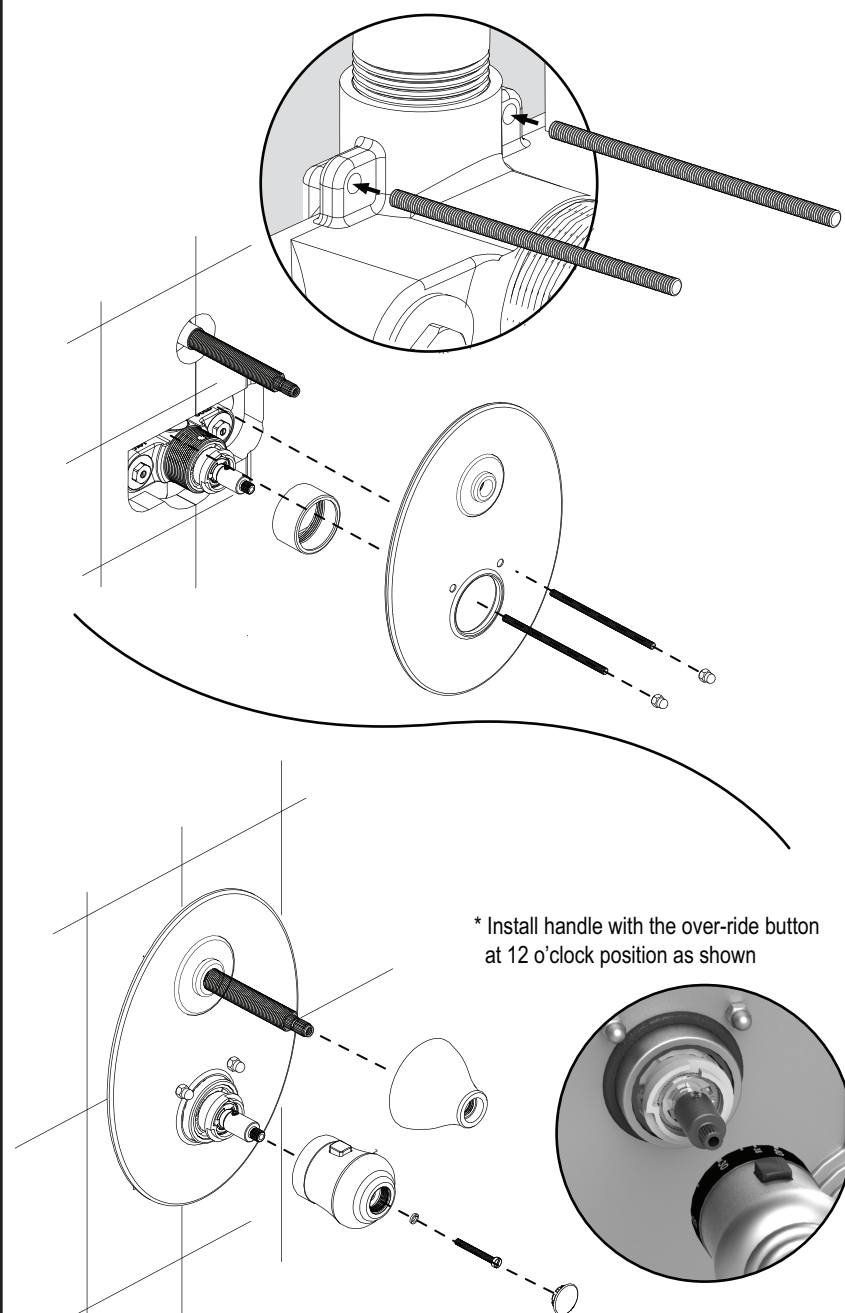
1



FACTORY CALIBRATED POSITION  
(at 38°C / 100°F)  
Red marks should be aligned  
at 12 O'Clock position

**\* IF PEX PIPING IS TO BE USED, DO NOT USE PEX WITH A DIAMETER OF LESS THAN 3/4" FOR MAXIMUM FLOW FROM THE VALVE**

2



3

